

Figure 1. Altar of Zeus from Pergamon. Plan view. Begun ca. 180 B.C.

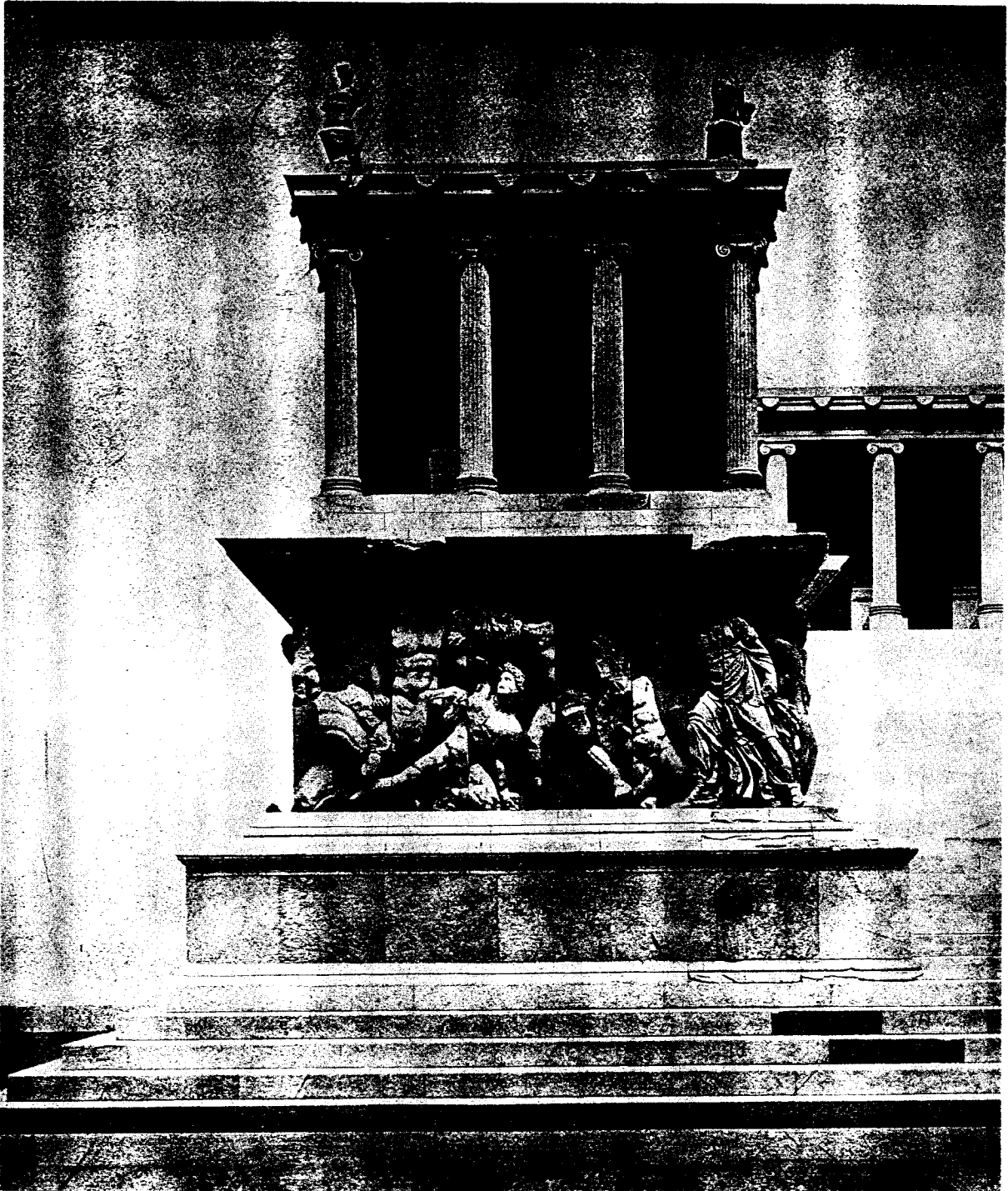


Figure 2. Altar of Zeus from Pergamon. Gigantomachy frieze. Staatliche Museen, East Berlin.



Herakles

Zeus

Typhon

Porphyr

Figure 3. Altar of Zeus from Pergamon. Gigantomachy frieze, Zeus and Athena panels. Staatliche Museen, East Berlin.

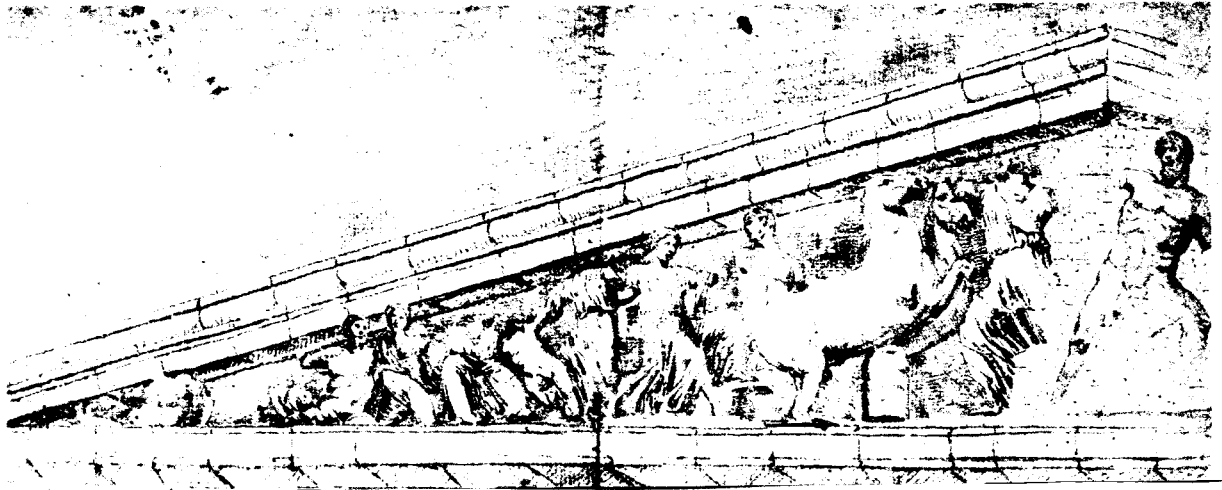


Figure 4a. Drawing of the west pediment of the Parthenon probably by Jacques Carrey around 1674. Bibliotheque Nationale, Paris.



Figure 4b. Part of the restored west pediment from the Parthenon. The restoration was made using plaster casts of the original pieces and restoring the remainder in light plastic. Cast Gallery, Basel.



Figure 5. Parthenon. Goddesses from the east pediment. 447 - 432 B.C.  
British Museum, London.



Figure 6. Parthenon. Gods from the east frieze. 447 - 432 B.C.  
British Museum, London.



Figure 7. Parthenon, east metopes. Gigantomachy, in situ.  
447 - 432 B.C.



139

ΜΕΣΣΑΝΙΟΙ ΚΑΙ ΝΑΥΠΑΚΤΙΟΙ ΑΝΕΘΕΝΑΙΙ  
ΟΛΥΜΠΙΑ ΔΕΚΑΤΑΝΑΡΧΟΤΟΜΡΟΦΕΜΙΩΝ  
ΕΑ ΟΥ ΔΕΕΡΟΤΗΕ ΕΝΕΑΙΚΕ  
ΚΑ ΠΑΡΤΟΛΕΙ ΑΡΧΑΝΕΡΩΝΝΑΓΝΕΤ ΑΣ

Figure 8. Marble statue. "Nike" by Painonios of Mende, ca. 420 B.C. Olympia Museum, Olympia.



Figure 9. Neck amphora by the Suessula Painter. Gigantomachy, late fifth century. Musee National du Louvre, Paris.





B. M. P. 101

GE

Figure 10. Calyx krater fragment. Near the Pronomos Painter.  
Gigantomachy, ca. 430 - 420 B. C. Museo Archeologico  
Nazionale, Naples.

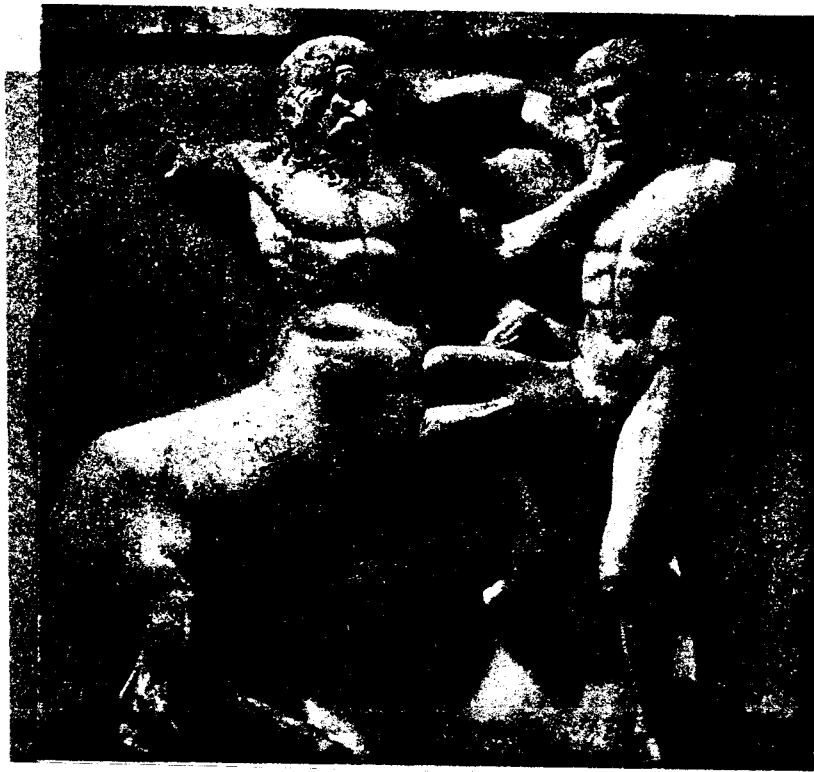


Figure 11a. Parthenon, south metope. Lapith fighting a centaur, 447 - 432 B.C. British Museum, London.



Figure 11b. Detail of Lapith face.



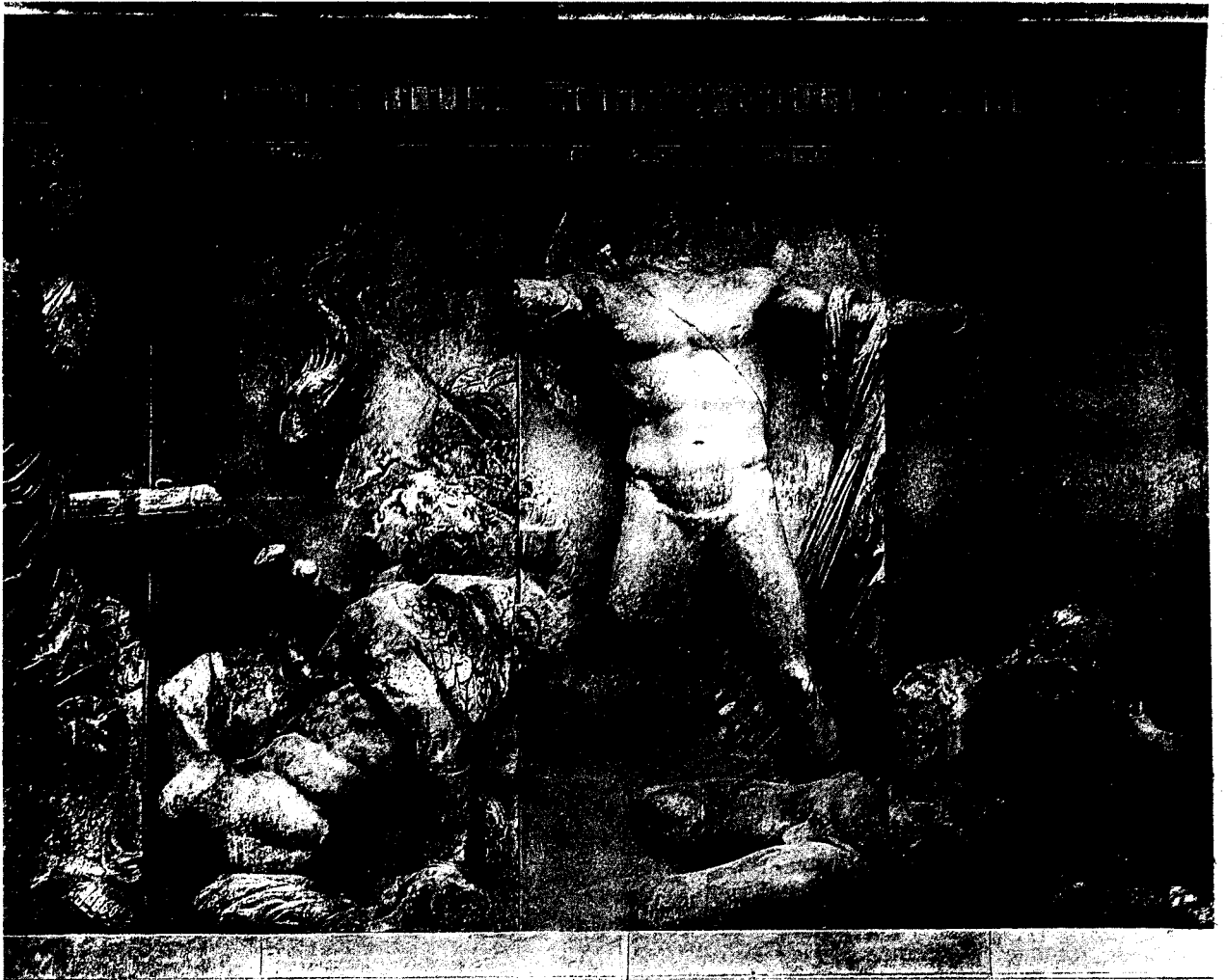
Nyx

Hesperidenschlange



Figure 12b. Detail of face of

Figure 12a. Altar of Zeus from Pergamon. Gigantomachy frieze, north side. Nyx fighting giant, begun ca. 180 B.C. Staatliche Museen, East Berlin.



Leto

Tityos

Apollon

Ephialtes

Figure 13. Altar of Zeus from Pergamon. Gigantomachy frieze, east side. Apollo fighting giant, begun ca. 180 B.C. Staatliche Museen, East Berlin.



Figure 14. Parthenon, south metope. Lapith fighting centaur, 447 - 432 B.C. British Museum, London.



Figure 15. Marble statue. Apollo Belvedere. Roman copy of Greek original from ca. 350 B.C. Musei Vaticani, Rome.



Figure 16. Altar of Zeus from Pergamon. Gigantomachy frieze, south side. Helios driving down giant. Begun ca. 180 B.C. Staatliche Museen, East Berlin.

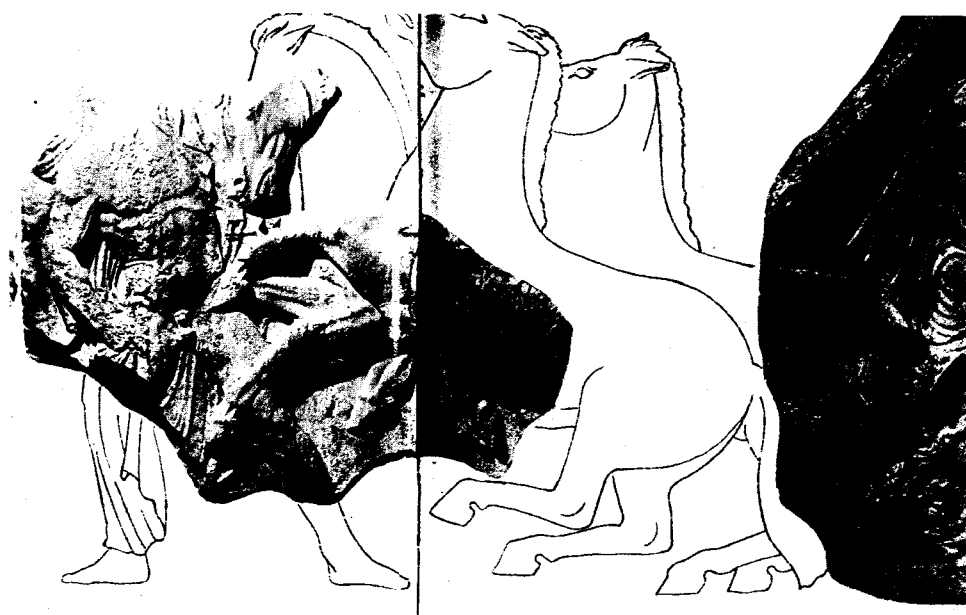


Figure 17: Parthenon, north frieze. Marshals directing charioteers, in situ. 447 - 432 B.C.





Mnemosyne?

Astraios

Figure 18. Altar of Zeus from Pergamon. Gigantomachy frieze, south side. Titan wrestling giant. Begun ca. 180 B.C. Staatliche Museen, East Berlin.



Figure 19. Attic Black-figure vase, neck amphora painted by Exekias. Hercules wrestling the Nemean lion, ca. 550 - 520 B.C. Staatliche Museen, East Berlin.

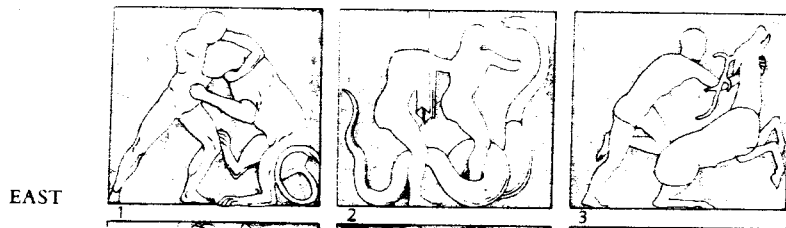


Figure 20. Temple of Hephaisteion, east metopes, in situ. Hercules wrestling the Nemean lion, ca. 421 - 415 B.C.



Figure 21. Altar of Zeus from Pergamon. Gigantomachy frieze, west side flanking the stairway. Triton trampling giant. Begun ca. 180 B.C. Staatliche Museen, East Berlin.



Figure 22. Marble stele of Dexileos, 394 - 393 B.C. Kerameikos Museum, Athens.